

EDUCATE TOGETHER

**Building a network of
INSPIRATIONAL schools**



Educate Together

- Irish educational charity
 - company limited by guarantee
- Origin in 1975,
Incorporated in 1998
- 22 national office staff
- Turnover ~€1.6m
- “Non-denominational
body operating multi-
denominational schools”
- Recognised by Irish State
 - patron of schools,
 - partner in education
 - representative body
for boards of
management of
Educate Together
schools

What we do





Educate

36% expenditure

- Open new schools
- Transform existing schools
- World class professional support service for schools



Innovate
53% expenditure

- 2nd level schools
- Curriculum development
- Building a self-sufficient social enterprise



Advocate

11% expenditure

- Empower parents
- Human rights = choice in Ireland
- Stand up for the rights of children

60 primary schools

Applied for 12 more to open in 2012 and 2013

More than 50 other viable locations

12 second-level applications

Fastest growing Irish network - great demand

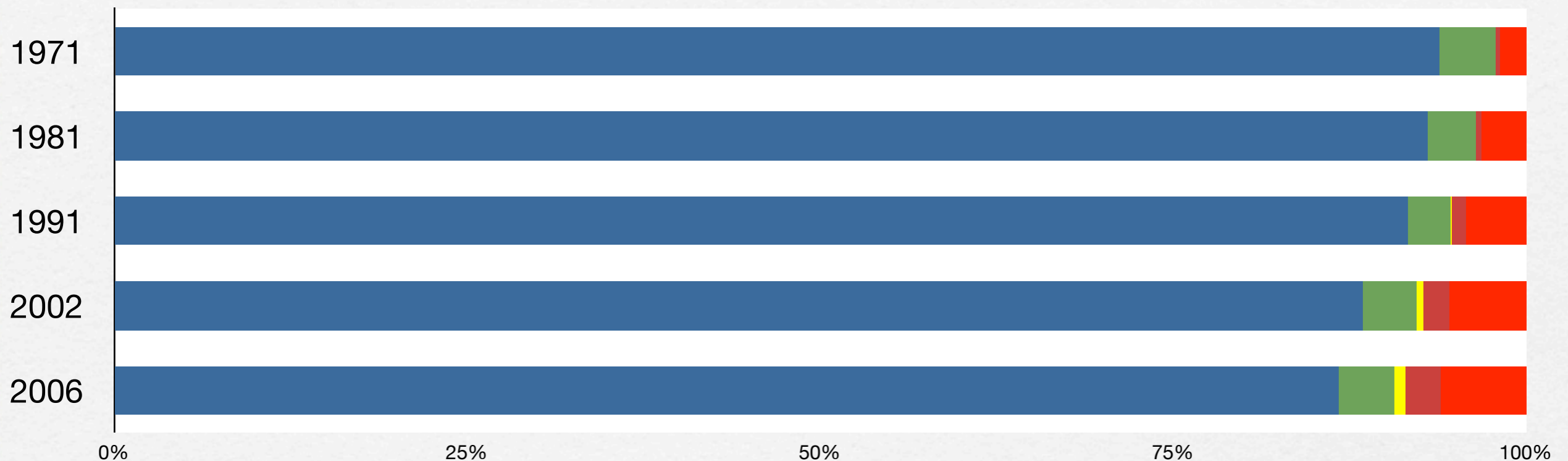
Very soon to be second largest provider of primary education in the State



Demographics

- Ireland's population 58% of population of 1800
- No other European State has suffered such an absolute decline in population
- Now barriers to development are removed population will gravitate towards European densities in next 50-100 years
- Record number of births 100,000 extra pupils 2007-2013
 - 22% increase in capacity
- Huge challenge in current budgetary circumstances - huge opportunity to address system change

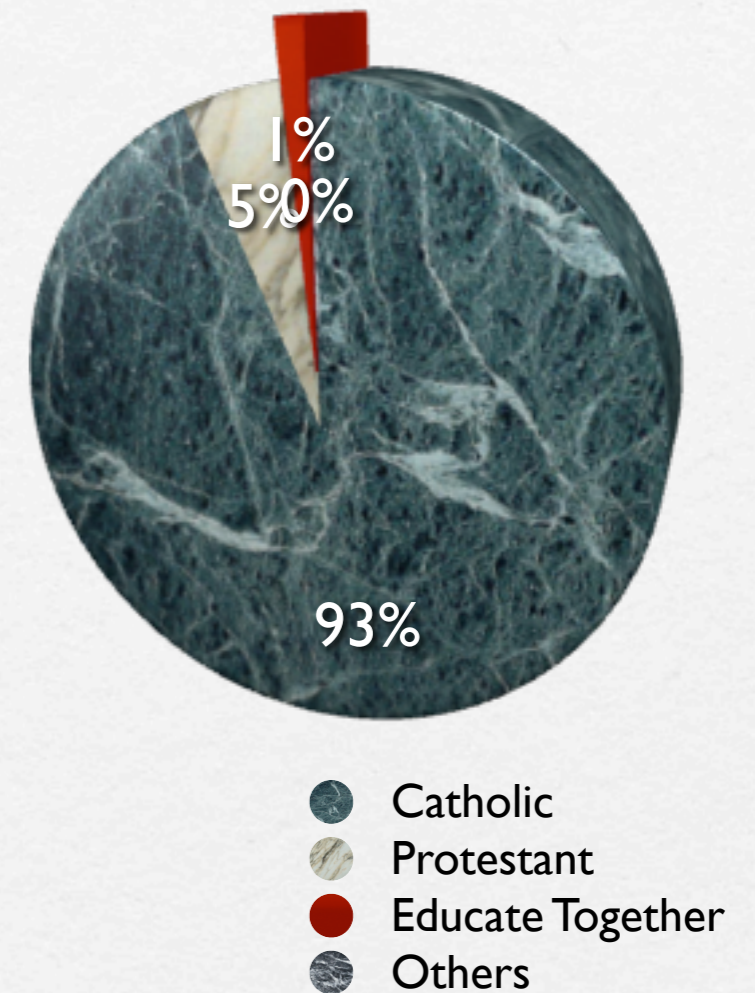
Diversity



- Diversity primarily due to the generation on generation change of view of indigenous population.
- By 2050, if current trends continue, less than 75% of population will identify themselves with current traditional religious identities.

Human Rights

- 98% of schools are privately-owned institutions controlled by religious organisations
- In many areas, no choice at all
- Increasing number of families compelled to send their children to schools against their conscience
- Issue brought to the United Nations and the Council of Europe
- Contradicts Constitutional obligations



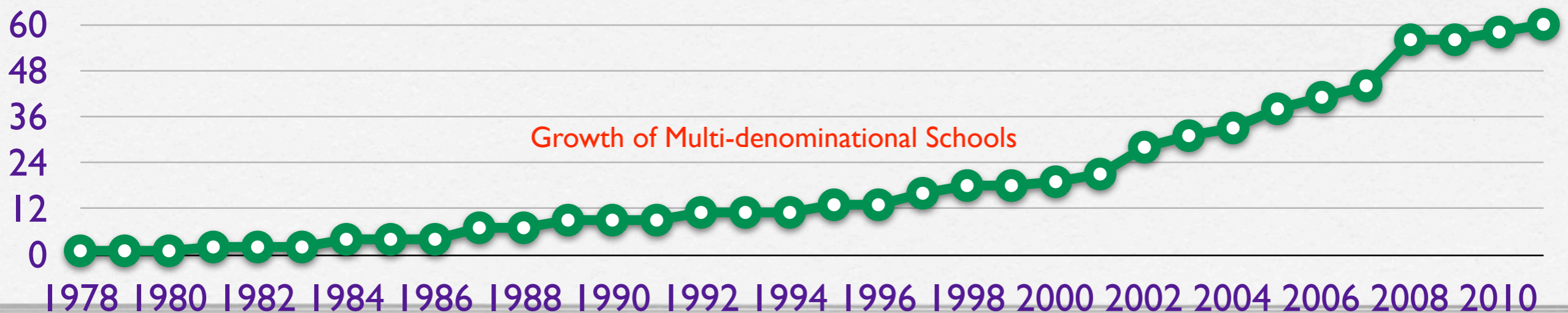
- Current government policy
- Forum on Patronage and Pluralism

Education for Equality

- Sustained demand for schools in which children are treated equally irrespective of background
- Equality in Education is not the same as Inclusion of minority children in a dominant faith environment.

Must take into account:

- Differentiated primary school classroom environment, one teacher, integrated curriculum
- Ethos to permeate whole school programme
- Discrete curriculum time to support this



RE in Educate Together Model

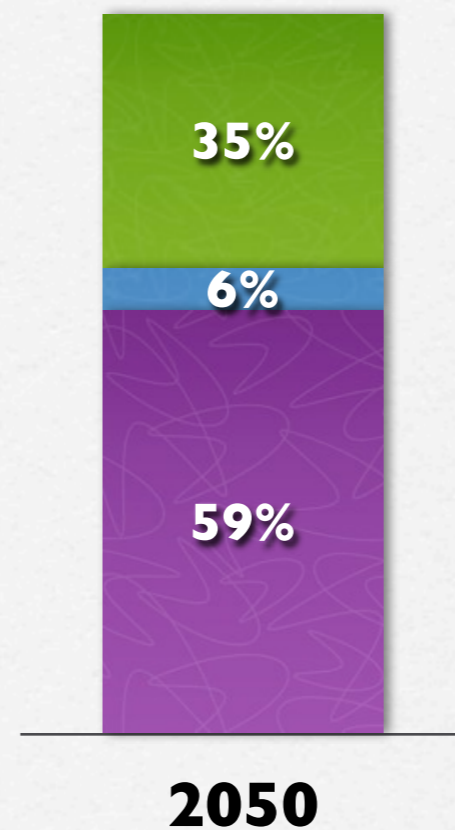
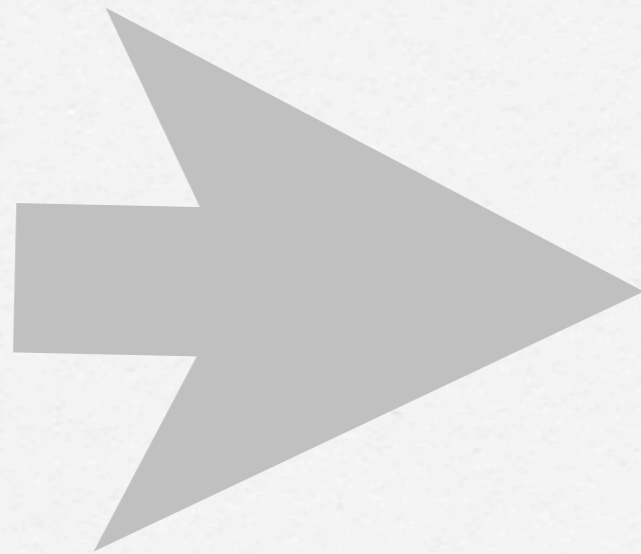
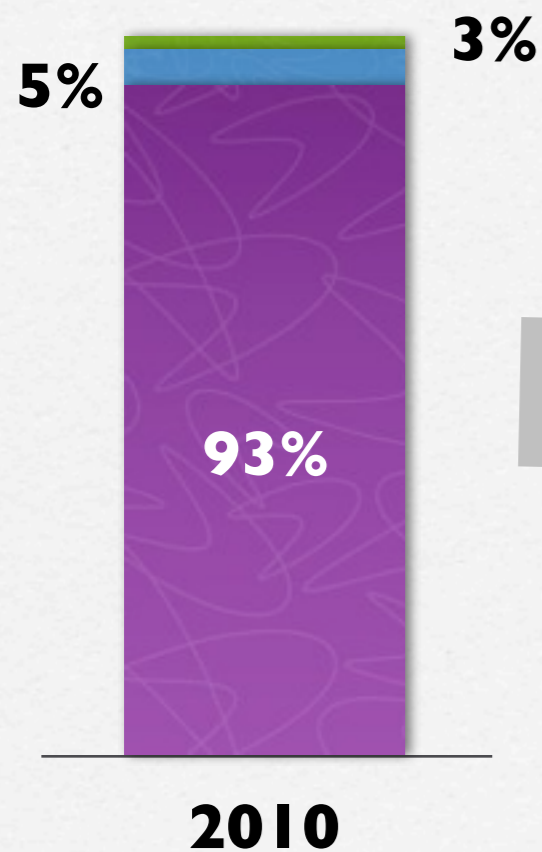
- Responsibility of school to deliver an environment in which the identity of the child is guaranteed active support and equality
- Schools delivers religious education curriculum that informs the child about all the main belief systems in the world
- Responsibility for faith formation rests with the family and religious institutions
- Facilities of the school offered to parents who wish to conduct faith formation classes outside school hours



- Integrated into the primary school curriculum, methodology and classroom experience
- Tried and tested model, mirroring the social space aspired to in modern equality legislation
- In our experience, may well provide an optimum environment for values formation of children, including their religious formation
- Key characteristic is that this model removes situations in which children are registered, labelled or separated according to the religious identity of their parents.



IMPACT



Real choice for families in Ireland

Real innovation at second-level

Education system fit for purpose

Playing major part in Ireland's future prosperity



Catholic

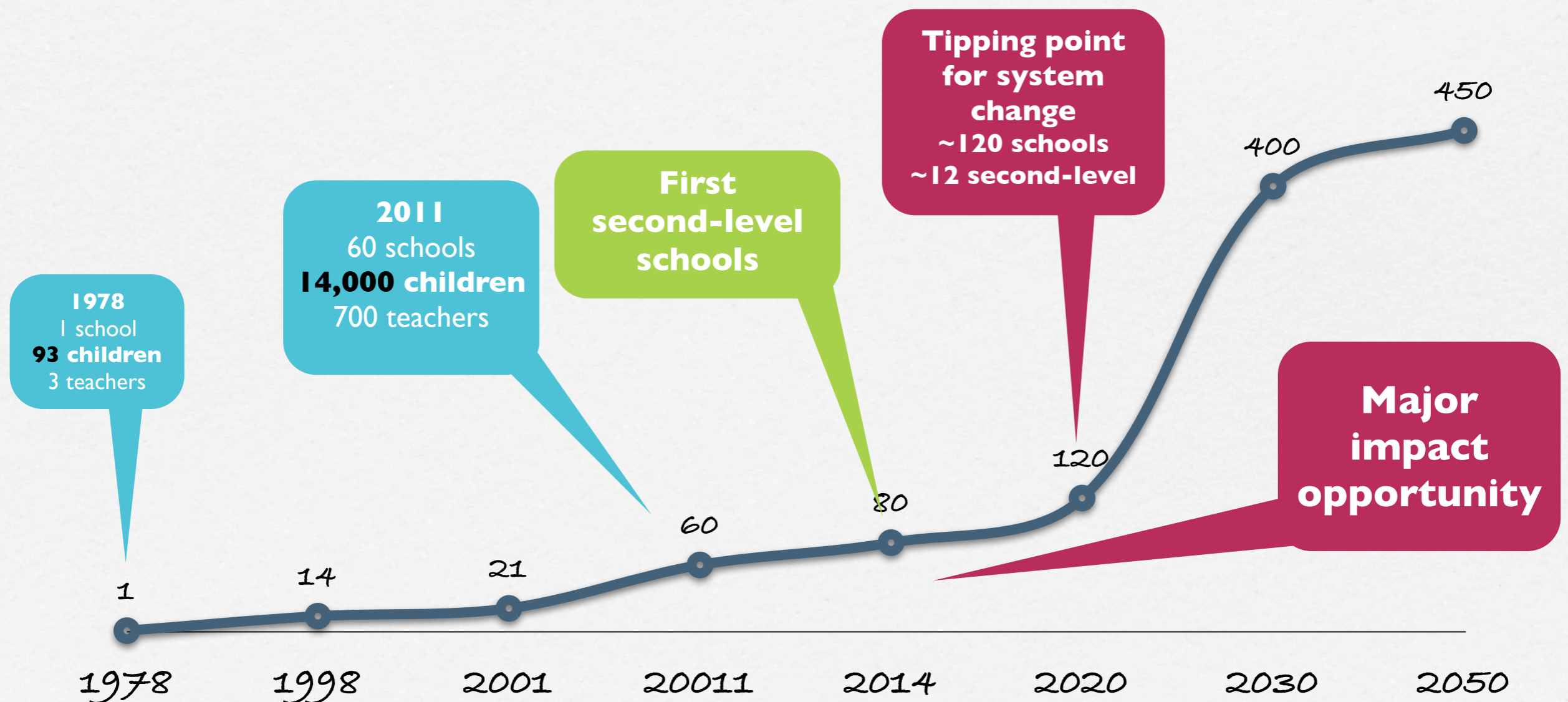


Other religious



Educate Together

33 years, 60 Primary Schools, 700 Teachers, 14,000 Students





Thank you

