



Educate
Together

Drogheda Educate Together Secondary School
Roll Number 68348 A

C/O Educate Together
Equity House, 16/17 Ormond Quay,
Dublin 7

Admission Policy

Nov 2018

ADMISSIONS POLICY 2019

INTRODUCTION

Drogheda Educate Together Secondary School (Drogheda ETSS) is an equality-based, co-educational secondary school recognised by the Department of Education and Skills (DES). As such, it operates within the regulations laid down by the DES. This Admissions Policy was developed in accordance with the provisions of the Education Act, 1998, the Education Welfare Act, 2000, the Equal Status Act, 2000, and the Education of Persons with Special Needs Act, 2004.

The Board of Management reserves the right to amend the number of student places in a year, according to the accommodation available to the school in consultation with the Department of Education and Skills.

VISION

The Drogheda Educate Together Secondary School is a new model of second-level school, one that places the student – your child – at its centre. We aim to create a vibrant, welcoming school community to which every student feels a real sense of belonging. We use the best teaching and learning methods to enable each individual student to reach their full academic and social potential.

AIM

Drogheda ETSS aims to provide an education that will enable all students to contribute meaningfully to their communities, embrace the rights and responsibilities of citizenship in a democratic society and develop the knowledge and skills necessary to live their lives and to build their careers in the 21st century.

OUR ETHOS

Educate Together Schools are committed to the values laid down in Educate Together's Charter. Our schools are learner-centred, equality-based, co-educational and run democratically. This means that all members of the school community, whatever their social, cultural or belief background, work together in an atmosphere of dignity and respect. Students follow an ethical curriculum, which includes learning about different religions and belief systems. Our ethos provides a strong moral, ethical and spiritual framework for the whole school community, and informs all policies and practices in the daily life of the school.

In exercising this policy making and decision making responsibilities the School Manager/Board of Management upholds the characteristic spirit of the school.

Admissions Criteria – First Year

The Admissions Policy for the school has been published in accordance with the requirements of the Education Act, 1998.

The admissions policy of Drogheda ETSS will reflect at all times the educational philosophy and aims of Educate Together. The admissions policy will also, at all times, reflect the school's mission and the ethos upon which the school has been founded.

Drogheda ETSS is committed to the principle of equal access. Decisions made in relation to enrolment will be governed by Department of Education and Skills regulations, staffing provisions and requirements concerning accommodation and health and safety of students.

Section 1: Criteria for Admission

All applicants to the school must be eligible for a place in a Post Primary school. Applicants for first years must have reached twelve years of age by January 1st of their first year in Drogheda ETSS e.g. students enrolling for 2019 must be 12 by 1st January 2020 and should be no older than is appropriate to their peers.

Students should have completed a primary school programme including 6th Class or equivalent.

Application for places in Drogheda ETSS will be completed online. First Year Enrolment Forms will be available on www.educatetogether.ie/drogheda-etss from **Monday 3rd December 2018**.

The closing date for receipt of applications is **5pm on Thursday 31st January 2019**.

Drogheda ETSS reserves the right to limit the number of incoming students each year, if it is deemed necessary. While every effort will be made to cater for all eligible applicants, the school is dependent on the resources provided to it by the Department of Education and Skills.

Number of places available in First Year 2019-20: 48

NB: A copy of the applicant's original birth certificate, two passport photos, proof of residence (2 utility bills) and additional information will be required to complete the acceptance process.

This policy will be reviewed by the Board of Management in November 2019 with final approval to be given by the patron.

Section 2: Allocation of Available Places

In the event of the number of applications being greater than the number of places available in First Year, the following criteria for allocation of places will be applied in this order:

1. Applicants who have siblings already enrolled in Drogheda ETSS.
2. Applicants living in the Drogheda ETSS catchment area, as defined in the attached Department of Education and Skills map (Appendix 1).
3. Applicants living outside the catchment area of Drogheda ETSS.

Note:

- In the event of applications in any of the above categories being greater than the number of places available, a Lottery will be used to determine the order that these places will be offered.
- The BOM will determine procedures for the conduct of this Lottery.
- All completed application forms must be exhausted before late applications will be considered.

Section 3: Allocation of Available Places to Late Applicants

In the event that applications are received for First Year, after the specified closing date for the following academic year, the date of receipt of completed applications will be utilised to rank order applications within the category outlines above.

Parents/guardians and /or students over 18 years of age may appeal a decision to refuse to enrol, to suspend for a period of 20 days or more or to exclude to The Secretary General of the Department of Education under Section 29 of the Education Act, 1998. Such appeals should be in writing and made within 42 days of the notification of such a decision cf. Circular M48/01.

Section 4: Special Needs

Drogheda ETSS welcomes applications from students with special educational needs (SEN) who meet the above criteria for admission.

Drogheda ETSS is committed, within its resources, to do all that is reasonable to accommodate students with special needs.

In order to assess the needs of a student with SEN, the school authorities will meet with the parents/guardians to discuss the student's needs and the schools' ability to meet those needs. A copy of the student's educational, medical, or where appropriate, psychologist's report will be requested.

To assist Drogheda ETSS in meeting needs it is essential that the Board is fully informed of the student's educational history and the resources required to provide an educational service appropriate to the applicant's best interests.

Section 5 : Refusal to Enrol/Rescinding of offer to Enrol

The school reserves the right to refuse enrolment or to rescind an offer of enrolment to an applicant in any of the following :

- In exceptional circumstances, the BoM may refuse to enrol an applicant or rescind an offer because the applicant has special needs such that, even with additional resources being made available from the DES/NCSE, the school cannot meet such needs and/or provide the applicant with an appropriate education.
- The BoM also reserves the right to refuse admission in exceptional circumstances where the applicant poses unacceptable risk(s) to other pupils, staff and/or school property.
- The terms of this enrolment policy are not complied with.

Procedure for Student Entry September 2019

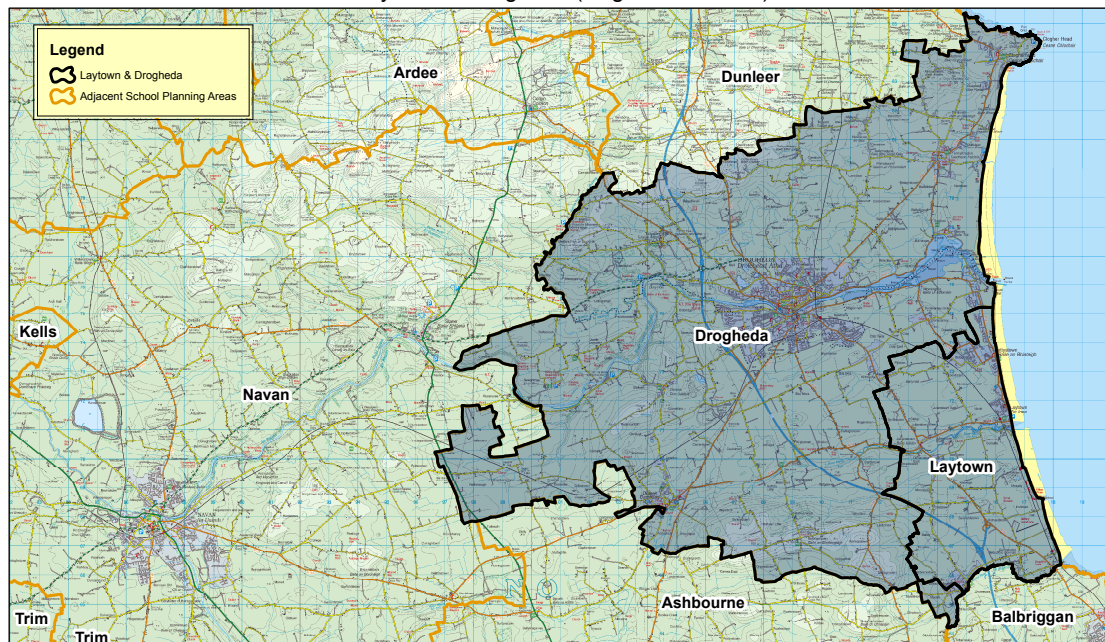
The process of admission to Drogheda ETSS will include a number of stages:

Note: Drogheda ETSS reserves the right to change any of the dates and procedures outlined below in accordance with changing circumstances.

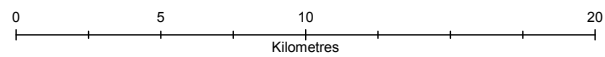
- Enrolment forms will be made available from **Monday 3rd December 2018**.
- All aspects of the enrolment form must be completed **fully** by the parents/guardians of the student being enrolled. (The information sought therein complies with the regulations of the various Data Protection Acts and will be managed in accordance with these acts.)
- Forms can be completed electronically at the Educate Together website www.educatetogether.ie/drogheda-etss from **Monday 3rd December 2018**.
- Enrolment forms will **only** be accepted in respect of first year entrants, i.e. students starting second-level in September 2019. For Transfers please see the schools **Transfer Policy**.
- The closing date for completed application forms will be **Thursday 31st January at 5pm**.
- Offers of places will be made by post from **Monday 11th February 2019**.
- A **Getting Started Form** will be sent with the offer of a place.
- Failure to respond to an offer of a place by fully completing the Getting Started form **and** Place Acceptance form, within 14 days of the offer being made, will result in the place being forfeited.
- Places will be offered in order of priority i.e. Priority 1, Priority 2, Priority 3. Please see Appendix 1 for details of the school defined catchment area.
- Anyone applying after Thursday 31st January at 5pm will be placed on a waiting list and offered a place only after the 3 priority categories have been offered places.

Appendix 1

Laytown & Drogheda (Regional Solution)



© Ordnance Survey Ireland.
All rights reserved.
License number EN0045608



An Roinn Oideachais agus Scileanna
Department of Education and Skills